

Lift&Drive



Lift&Drive

Pharmacy model

 PRONOMIC

Pharmacy model “crate lifter”

Specially designed for pharmacies

The Pharmacy model, designed with a focus on ergonomics, ensures an efficient and safe working environment by reducing the risk of strain injuries.

The trolley is light and very maneuverable, perfect for lifting and transporting of crates, cartons and similar items. It makes tasks such as restocking of shelves a great deal easier.

The basic version is equipped with an up-and-down foldable loading platform and a fork, specially designed to carry pharmacy crates. The Pharmacy trolley is easy to use and requires almost no maintenance.

The battery charger is handily placed in a holder on the trolley and can easily be connected to a standard outlet for recharging. The trolley is sturdy and solidly built; a truly durable product made of aluminum and lacquered steel.

The trolley manages loads up to 70 kg. It has built-in protection against crushing injuries and bears the CE Conformity Marking.



Loading platform and handlebar

The platform of the pharmacy model can be folded up vertically and down horizontally.

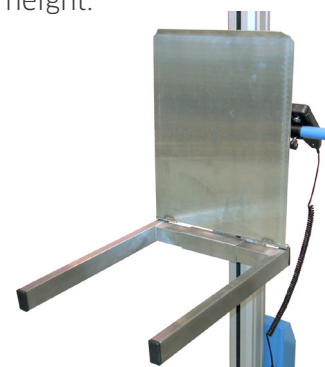
Under the platform is a fork, specially designed to carry pharmacy crates. The height of the platform can easily be adjusted using the control box.

The maneuvering device is detachable and handily placed in a holder on the trolley's handlebar

With the platform tipped up, the fork can be used to lift crates, whole stacks of them simultaneously if necessary.

Fold down the platform in case you wish to handle or lift cartons, boxes and such items.

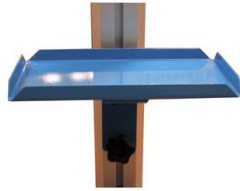
The height of the handlebar can easily be adjusted, quickly allowing each user to fix it at a comfortable height.



Accessories



Part no.15012
Loading platform,
pharmacy model



Part no. 15016
Shelf



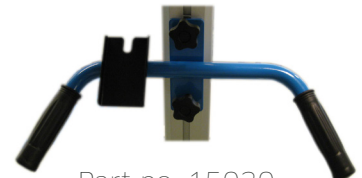
Part no. 15029
Adapter, for handling
crates of varying width



Part no.15013
Holder for checklist



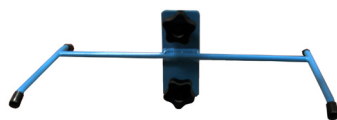
Part no. 15017
Writing pad



Part no. 15030
Handlebar grips, rubber



Part no. 17134 (18V)
Part no. 19010A (24V)
Battery charger



Part no.15014
Litter-bag holder, single



Part no. 15019
Angled fixture,
checklist holder



Part no.17230A
Holder for battery
charger



Part no.15015
Litter-bag holder, double



Part no. 15024
Crate holder for empty crates, to
keep the surrounding floor clear.



Part no. 17272
Control box

Lift&Drive Pharmacy model

The Pharmacy model is our neat and maneuverable lift trolley, specially designed to facilitate work in pharmacies. The chassis is merely 435 mm wide, which makes the trolley very light and easy to maneuver. Despite its slight dead weight the trolley manages loads up to 70 kg.

The mast possesses a screw drive and is available in different heights.

For maximum safety the trolley is equipped with a built-in release function to prevent the trolley from tipping over and accidents involving squeeze injuries.

The trolley is CE marked.

Technical specifications for Lift&Drive, Pharmacy model 70E

Mast	Overall height, standard	Overall height, low-built	Total lifting height, standard	Total lifting height, low-built	Length of stroke
-250	1442	1413	1123	1094	984
standard	1692	1663	1373	1344	1234
+250	1942	1913	1623	1594	1484
+500	2192	2163	1873	1844	1734
Minimum lifting height, standard, low-built			139, 110 mm		
Overall width			498 mm		
Length (without loading platform) standard, low-built			735, 716 mm		
Loading platform (LxW)			xmm		
Wheel diameter (front/rear) standard, low-built			80/100, 50/75 mm		
Maximum load 70E, 70ES			70 kg		
Dead weight			33 kg		
Battery voltage			24 V		
Battery capacity			6.5 Ah		
Charging voltage			230VAC/50Hz or 115VAC/60Hz		
Material			Chassis in powder-coated steel		

The platform can if necessary be moved 110 mm upwards in the sled.

For more info please
contact your sales
representative

”
Your leading
specialist for
ergonomic
lifting tools
”

PRONOMIC AB

info@pronomic.se
www.pronomic.se

SMEYERS-TU NV/SA

Treft 61 / 3 B-1853 Strombeek-Bever
☎ 02-461 21 09 ☎ 02-461 21 44

www.pronomic-lift.be

 **PRONOMIC**